

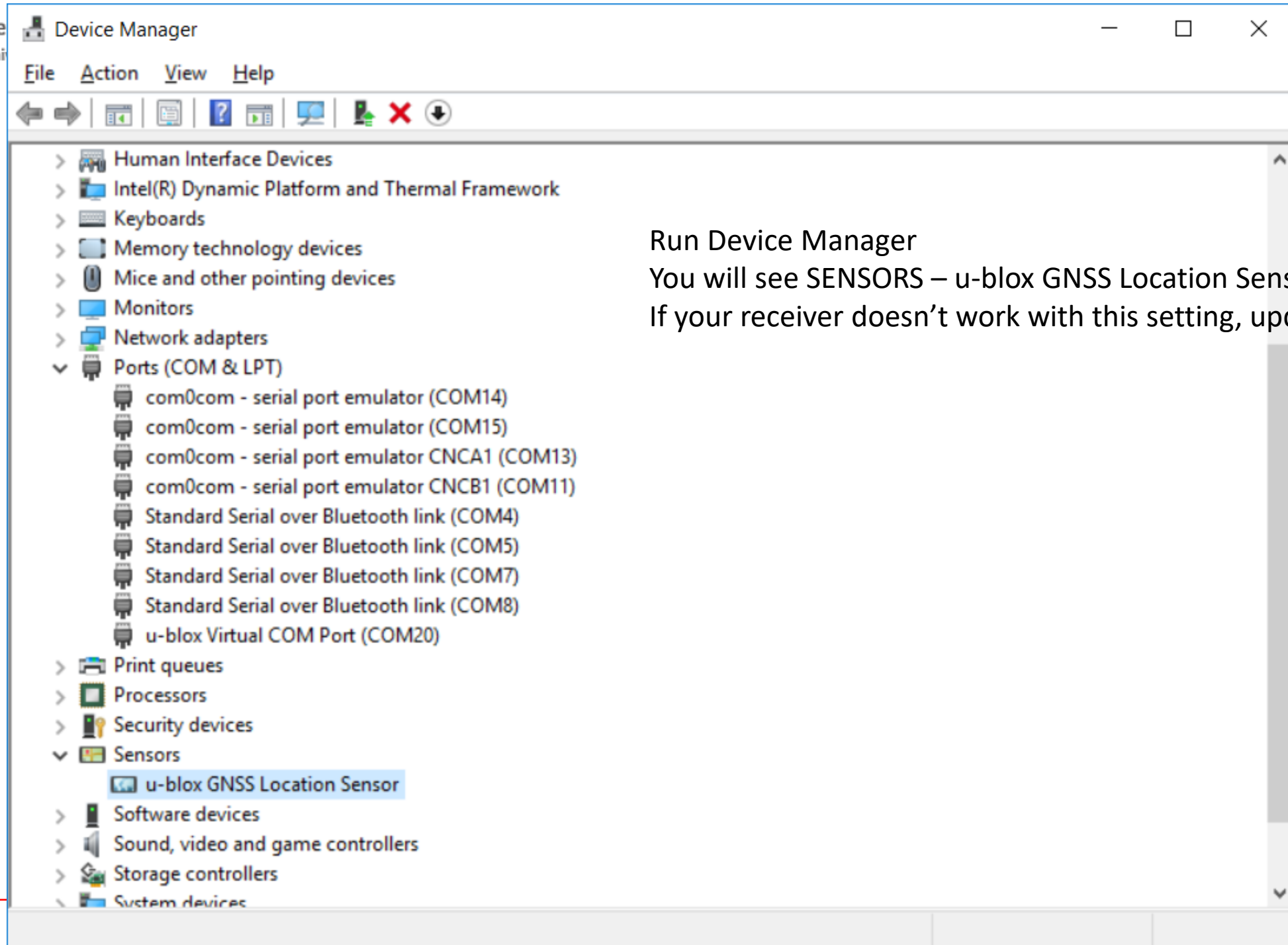
# U-Blox Receiver COM Port Setting

Dinesh Manandhar

Center for Spatial Information Science

The University of Tokyo

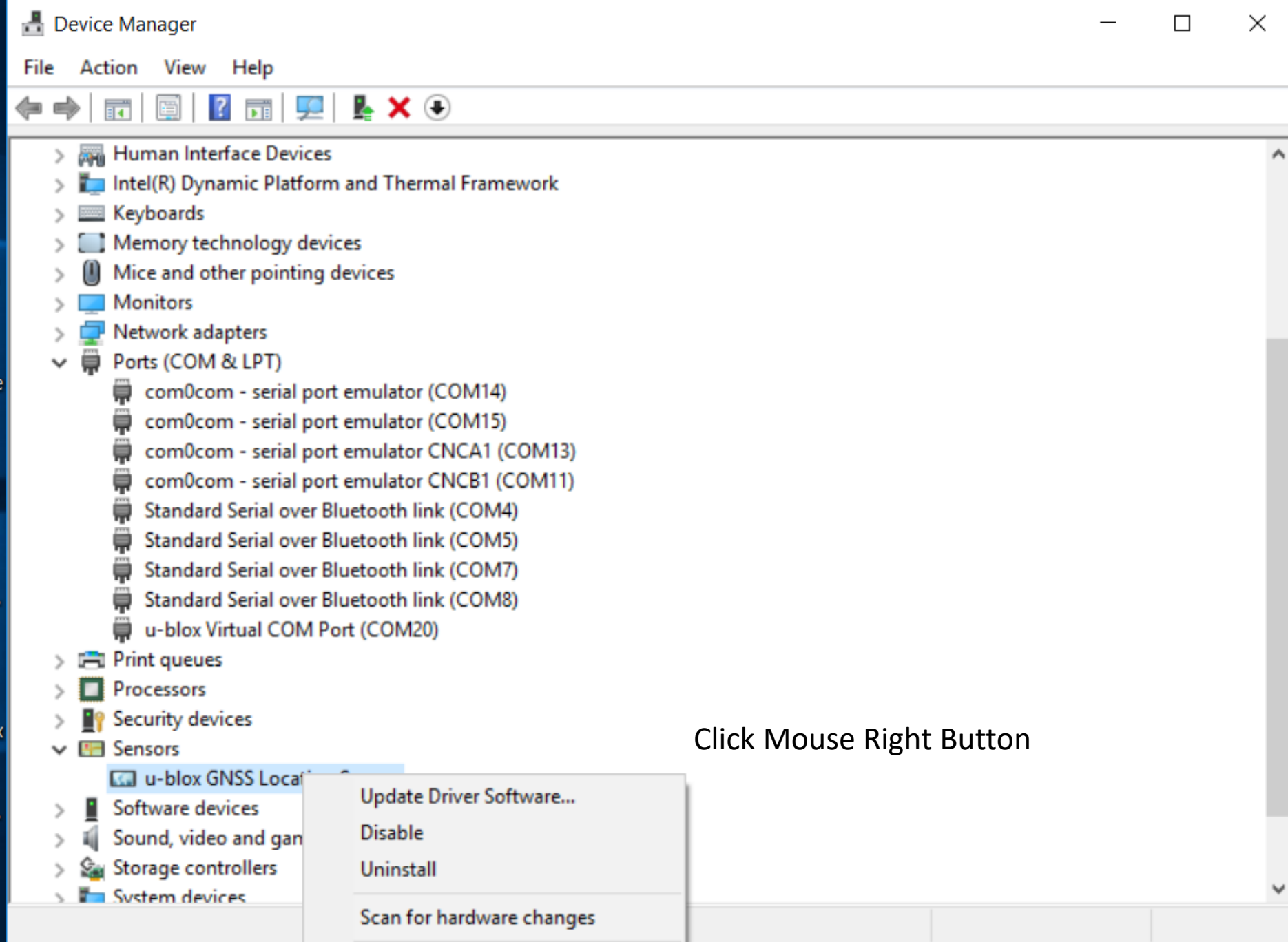
Contact Information: [dinesh@iis.u-tokyo.ac.jp](mailto:dinesh@iis.u-tokyo.ac.jp)



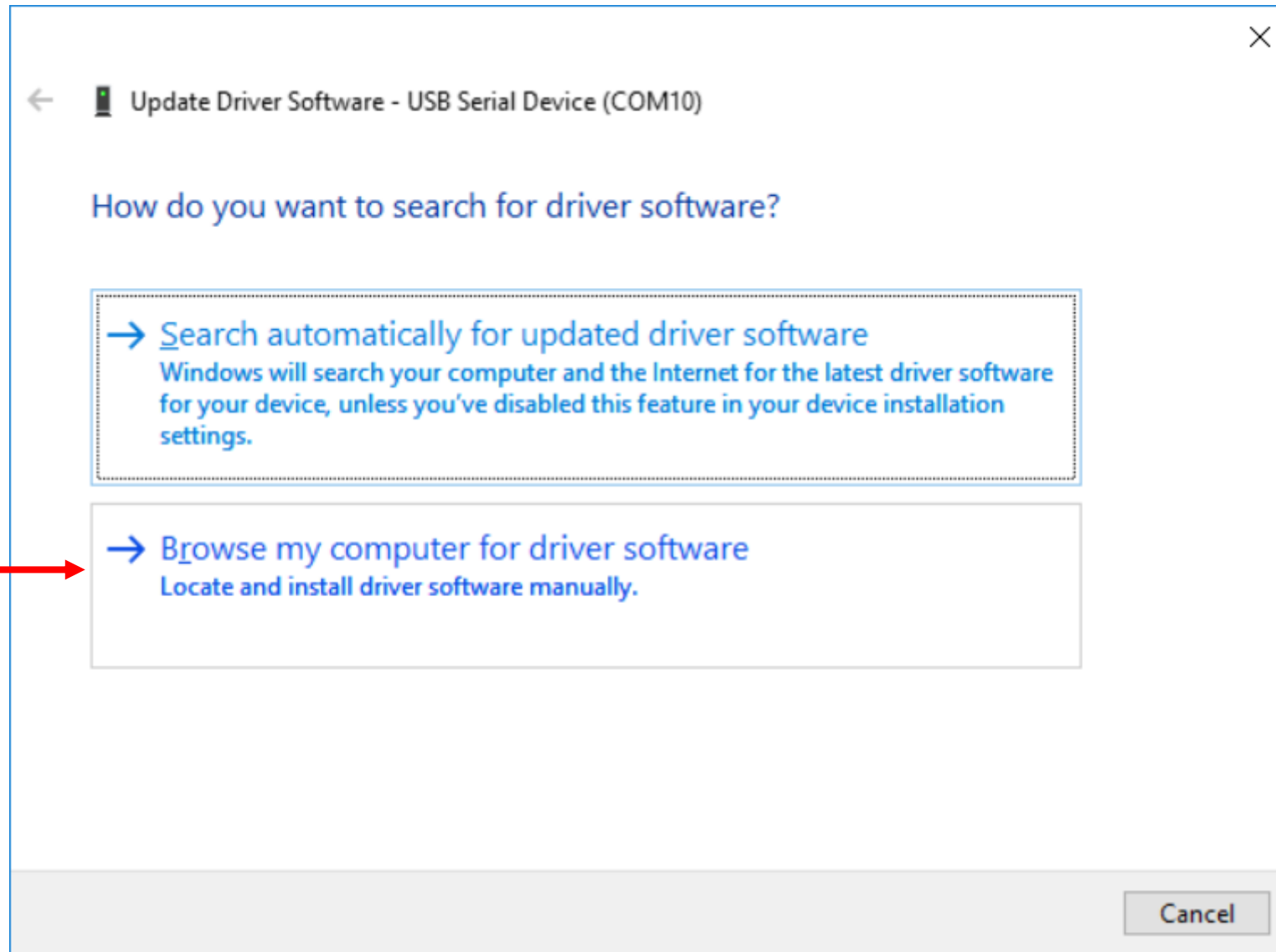
Run Device Manager

You will see SENSORS – u-blox GNSS Location Sensor

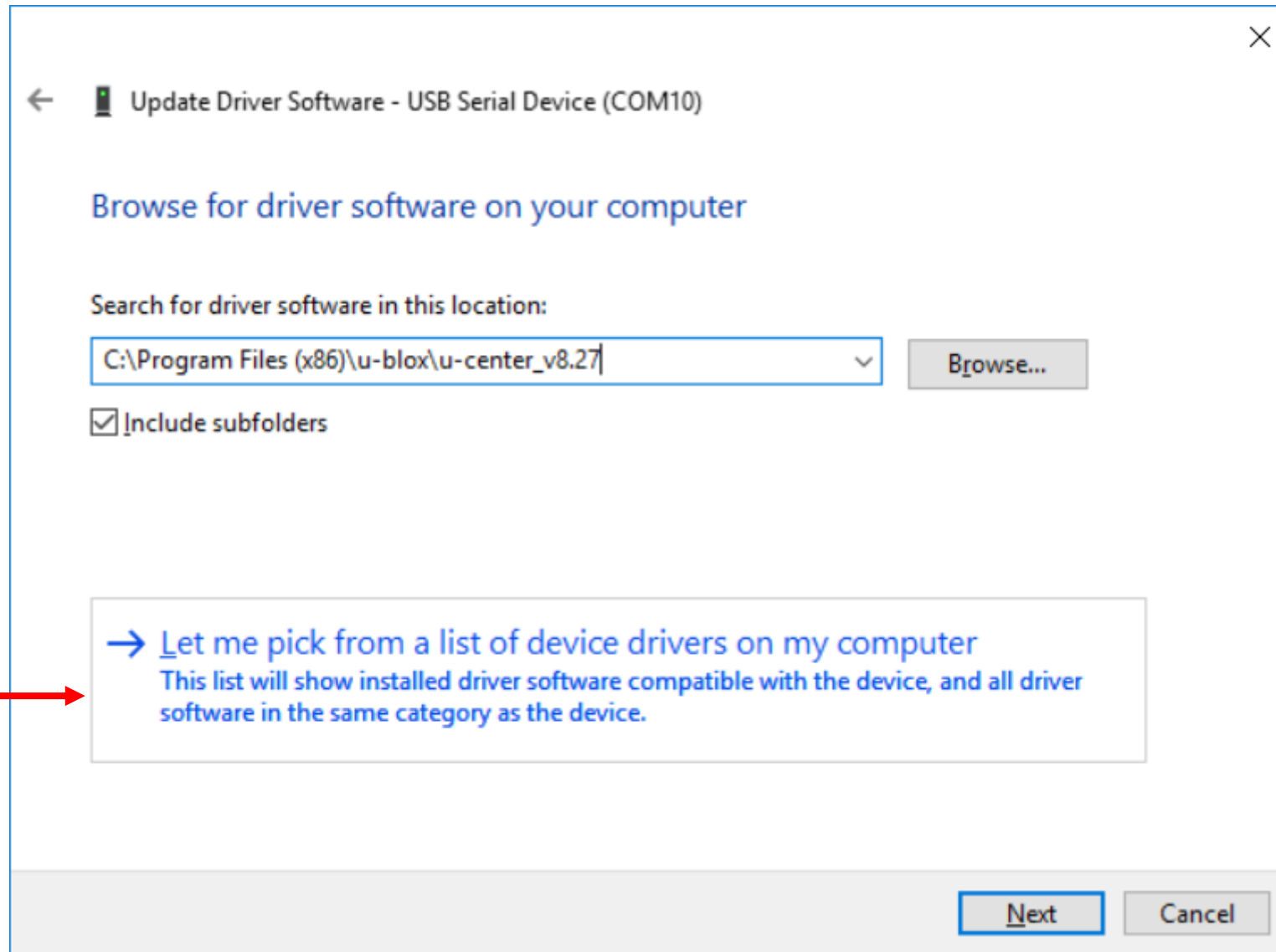
If your receiver doesn't work with this setting, update this driver



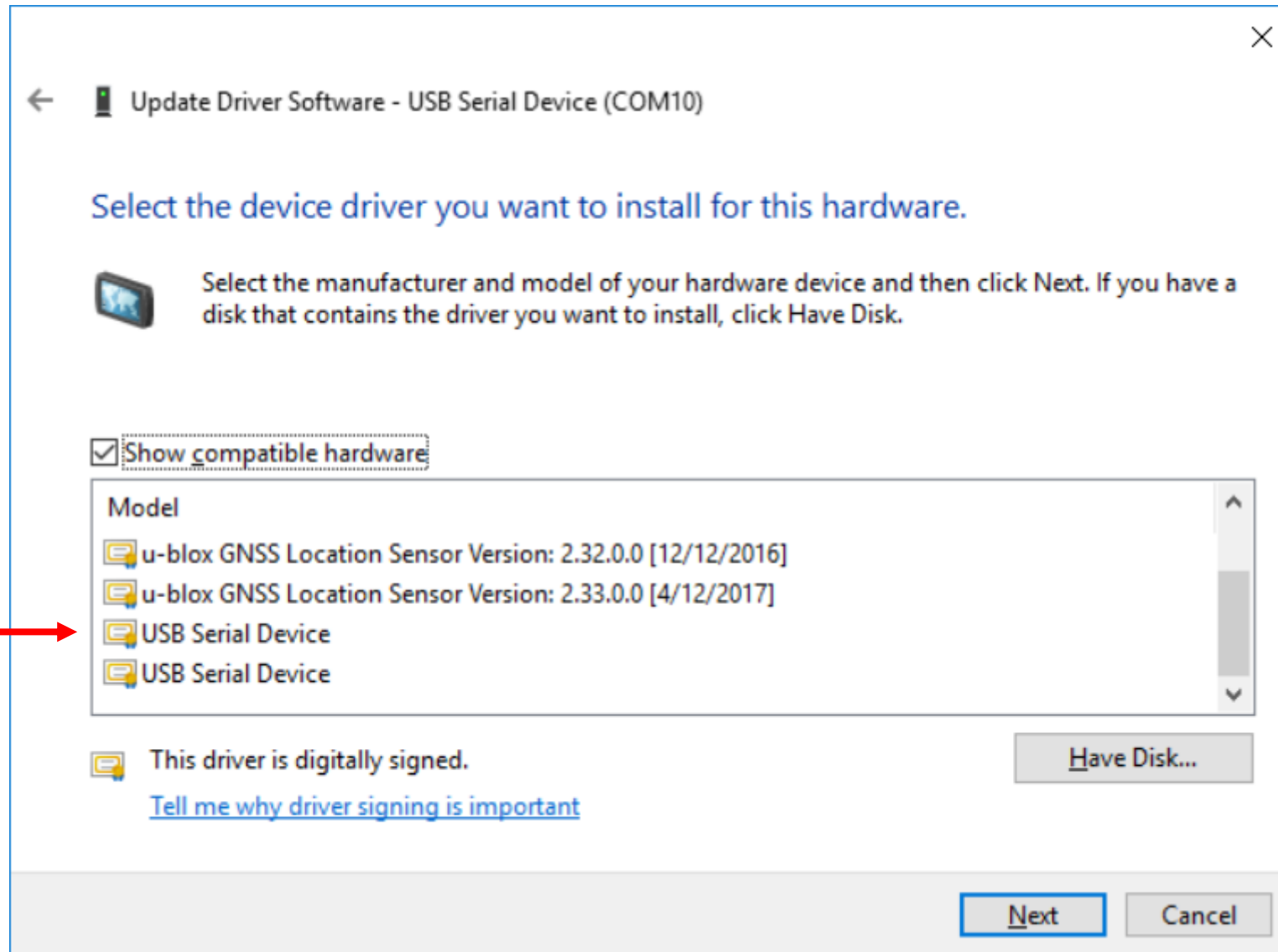
Click Mouse Right Button



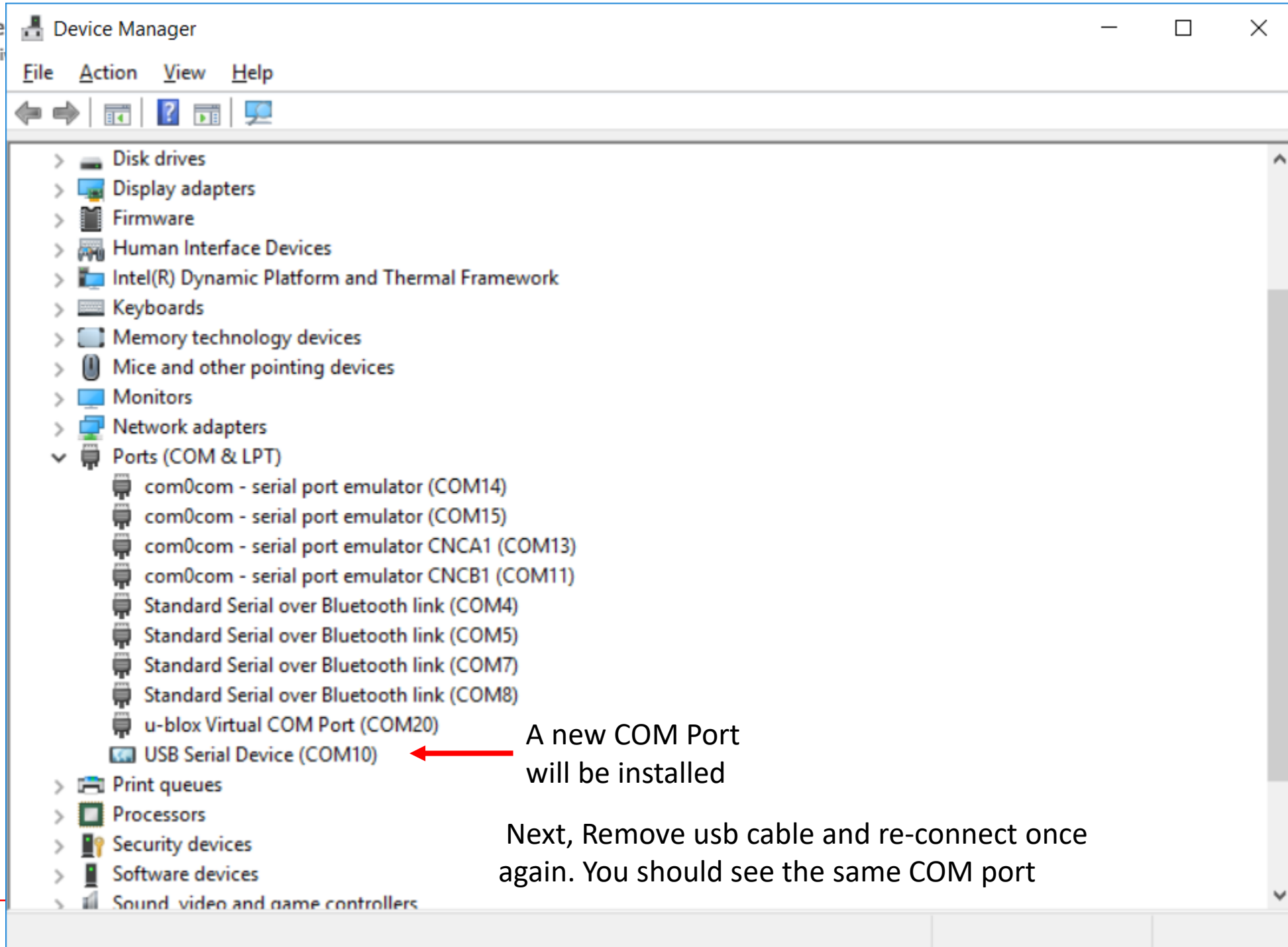
Select this option →



Select this option →



Select this option →



COM10 - u-center 8.26 - [Messages - UBX - RXM (Receiver Manager) - SFRBX (Subframe Data ...

File Edit View Player Receiver Tools Window Help

Disconnect Ctrl-0  
COM5 Ctrl-5  
COM7 Ctrl-7  
• COM10 Ctrl-10  
COM11 Ctrl-11  
COM13 Ctrl-13  
COM14 Ctrl-14  
COM15 Ctrl-15  
Network connection >

MSG	DATA (* denotes inv
0	5/74 389055C3 3D0D28C;
0	5/74 389055C3 3D0D28C;
0	5/74 389055C3 3D0D28C;
0	5/74 389055C3 3D0D28C;
0	E3 031E7FF4 D487F24C
0	A 0 4/55/1 22C3C527 1EFC6C11
0	A 0 4/55/1 22C3C527 1EFC6C11
GPS 8 L1C/A 0	4/55/1 22C3C527 1EFC2A21
GPS 9 L1C/A 0	2 22C3C527 1EFC6C11
GPS 11 L1C/A 0	4/55/1 22C3C527 1EFC6C11
GPS 21 L1C/A 0	4/55/1 22C3C527 1EFC6C11
GPS 23 L1C/A 0	4/55/1 22C3C527 1EFC6C11
GPS 26 L1C/A 0	4/55/1 22C3C527 1EFC6C11
GPS 31 L1C/A 0	4/55/1 22C3C527 1EFC6C11
QZSS 2 L1C/A 0	4/56/3 22C0AA81 9EFC6421
QZSS 2 L1SAIF 0	50 9AC90C3D FC00056
SBAS 128 L1C/A 0	28 9A720CE5 AD0FE08
SBAS 129 L1C/A 0	4 9A118031 FFDFFDF
SBAS 137 L1C/A 0	4 9A118031 FFDFFDF

53.400 m x100

51 43 33 42 42 41 37 39 45 41 45 39 37 30 40 31 31 17  
53G 42B1G 85 29 26 251 251 62B 4E1 43B 2G 9197 251B 161 0dB

09:45:39 UTC  
Thursday 02/22/2018

Ready u-blox M8/ COM10 960C No file open NMEA 00:08:0 09:45:0

Run u-center and select COM Port. You will see the New COM port here. Select it.

It should work now See the COM Port and green light blinking here